

In die Meshparts Adresszeile fügen Sie diese Adresse ein und bestätigen mit der Return-Taste:

[https://www.meshparts.de/StandardComponents/MToolBox/01\\_Drive/03\\_BallScrewSpindle/BallScrewSpindle\\_3D.ans](https://www.meshparts.de/StandardComponents/MToolBox/01_Drive/03_BallScrewSpindle/BallScrewSpindle_3D.ans)

The screenshot shows the Meshparts website interface. An orange arrow points to the address bar containing the URL: [https://www.meshparts.de/StandardComponents/MToolBox/01\\_Drive/03\\_BallSc](https://www.meshparts.de/StandardComponents/MToolBox/01_Drive/03_BallSc). The main content area is divided into three sections:

- File List:** A table showing a directory structure of files and folders. The file `BallScrewSpindle_3D.ans` is highlighted.
- User Login:** A form with a text input field containing `alexandru_dadalau@yahoo.de`, a password field with masked characters, and a `Sign Out` button. Below the form are links for `Send me a new temporary password per e-mail.` and `Change password.`, and a `Register as a new user` link.
- Parameters:** A table with 11 rows of parameters, each with a numerical index, a parameter name, a value field, and a unit `[mm]`. The parameters are: 1 SL, 2 SD, 3 LS1L, 4 LS2L, 5 ES1L, 6 ES2L, 7 LS1D, 8 LS2D, 9 ES1D, 10 ES2D, and 11 LB1.

Name	Date modified	Size
01_Drive		1.01 GB
01_Motor		114.86 MB
02_Coupling		83.98 MB
03_BallScrewSpindle		537.74 MB
BallScrewSpindle_1D.ans	2017-05-23 21:13:16	6.37 KB
BallScrewSpindle_3D.ans	2017-05-23 21:13:16	6.61 KB
BallScrewSpindle.mpasm	2016-02-29 14:17:49	2.18 KB
04_BallScrewNut		127.88 MB
05_PlanetaryGear		134.00 MB
06-ToothedRack		2.41 MB
07_SynchronDisc		3.63 MB
08_TimingBelt		17.17 MB
09-ToothedWheel		16.32 MB
10_Controller		637.46 KB
02_Guide		274.58 MB
03_Mount		796.53 MB
04_Fastener		324.55 MB

Index	Parameter	Value	Unit	Icon
1	SL		[mm]	⚙️
2	SD		[mm]	⚙️
3	LS1L		[mm]	⚙️
4	LS2L		[mm]	⚙️
5	ES1L		[mm]	⚙️
6	ES2L		[mm]	⚙️
7	LS1D		[mm]	⚙️
8	LS2D		[mm]	⚙️
9	ES1D		[mm]	⚙️
10	ES2D		[mm]	⚙️
11	LB1		[mm]	⚙️

Rechts-Klick auf BallScrewSpindle\_3D.ans und dann >Download

The screenshot shows the MeshParts website interface. On the left, a file tree lists various components under 'MESHPARTS 20180830'. The file 'BallScrewSpindle\_3D.ans' is selected, and a context menu is open over it. An orange arrow points from the text above to the 'Download' option in the menu. The background shows a user login form and a sidebar with navigation buttons.

Name	Date modified	Size
BallScrewSpindle_1D.ans	2017-05-23 21:13:16	6.37 KB
BallScrewSpindle_3D.ans		
BallScrewSpindle.mpasm		
04_BallScrewNut		
05_PlanetaryGear		
06_ToothedRack		
07_SynchronDisc		
08_TimingBelt		
09_ToothedWheel		
10_Controller		
02_Guide		
03_Mount		
04_Fastener		
MToolBox.mpasm		
Users		

Context menu options for 'BallScrewSpindle\_3D.ans':

- Open with standard program
- Mesh statistics
- Delete
- Generate
- Download
- Upload
- Go to on/offline path
- Refresh
- Find
- Collapse sibling items
- Collapse parent item

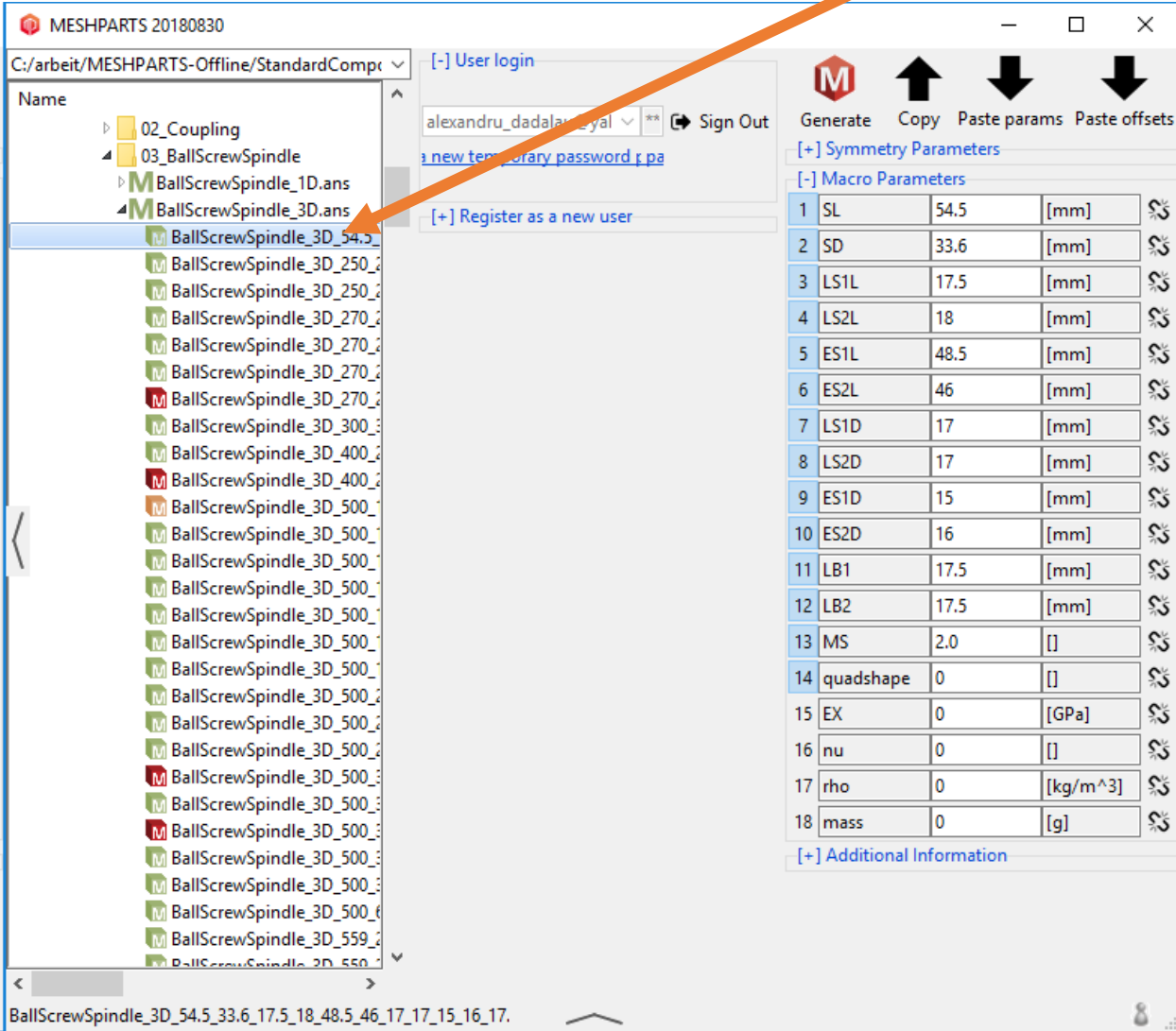
Background interface elements:

- URL: [https://www.meshparts.de/StandardComponents/MToolBox/01\\_Drive/03\\_BallSc](https://www.meshparts.de/StandardComponents/MToolBox/01_Drive/03_BallSc)
- User: alexandru\_dadalau@yahoo.de
- Buttons: Sign Out, Register as a new user, Send me a new temporary password per e-mail, Change password.
- Right sidebar: Generate, Copy, Paste params, Paste offsets, Symmetry Parameters, Macro Parameters table.

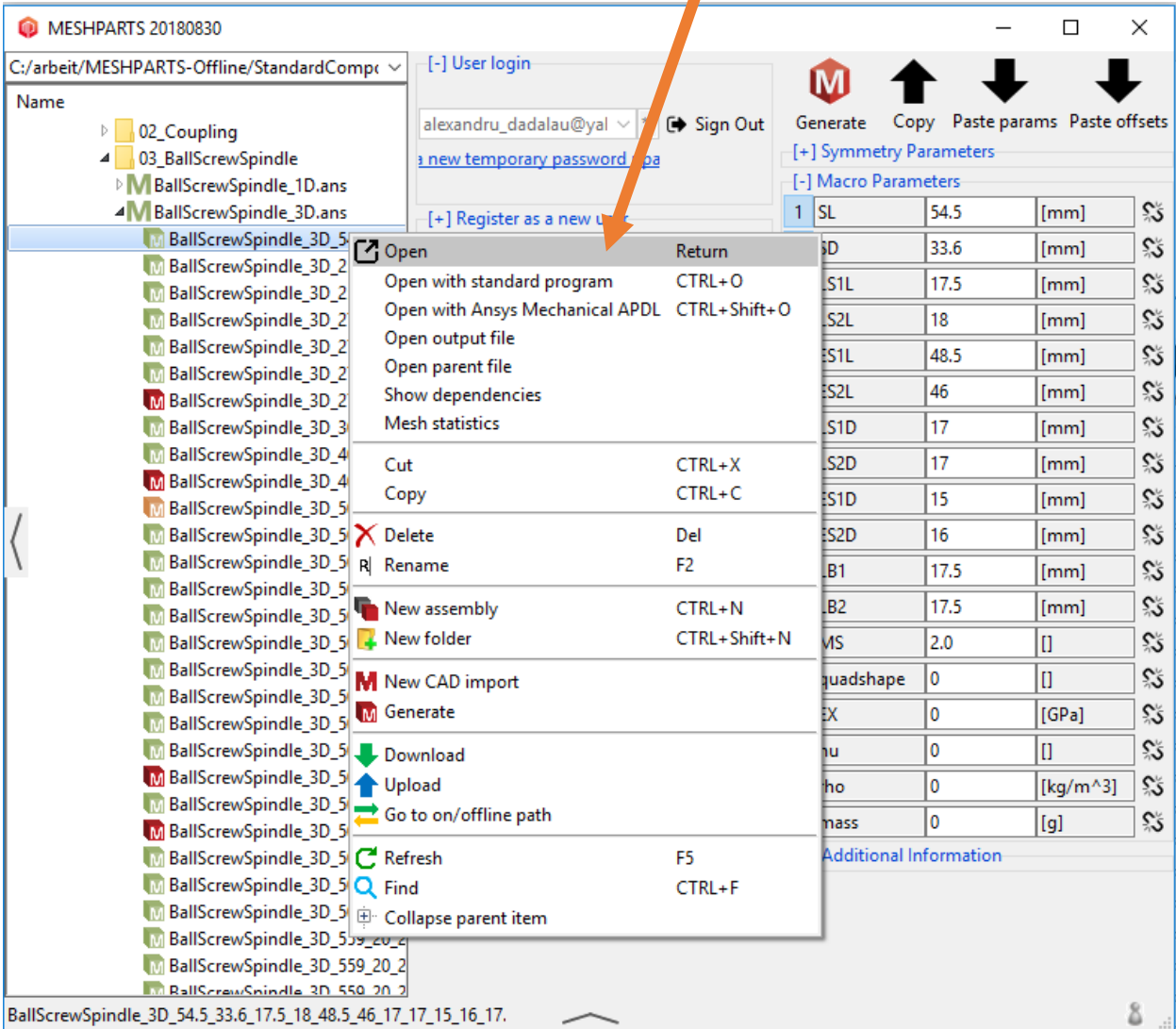
[+] Symmetry Parameters			
[-] Macro Parameters			
1	SL	[mm]	🔄
2	SD	[mm]	🔄
3	LS1L	[mm]	🔄
4	LS2L	[mm]	🔄
5	ES1L	[mm]	🔄
6	ES2L	[mm]	🔄
7	LS1D	[mm]	🔄
8	LS2D	[mm]	🔄
9	ES1D	[mm]	🔄
10	ES2D	[mm]	🔄
11	LB1	[mm]	🔄

BallScrewSpindle\_3D.ans (Date modified: 2017-05-23 21:13:16, Size: 6.61 KB)

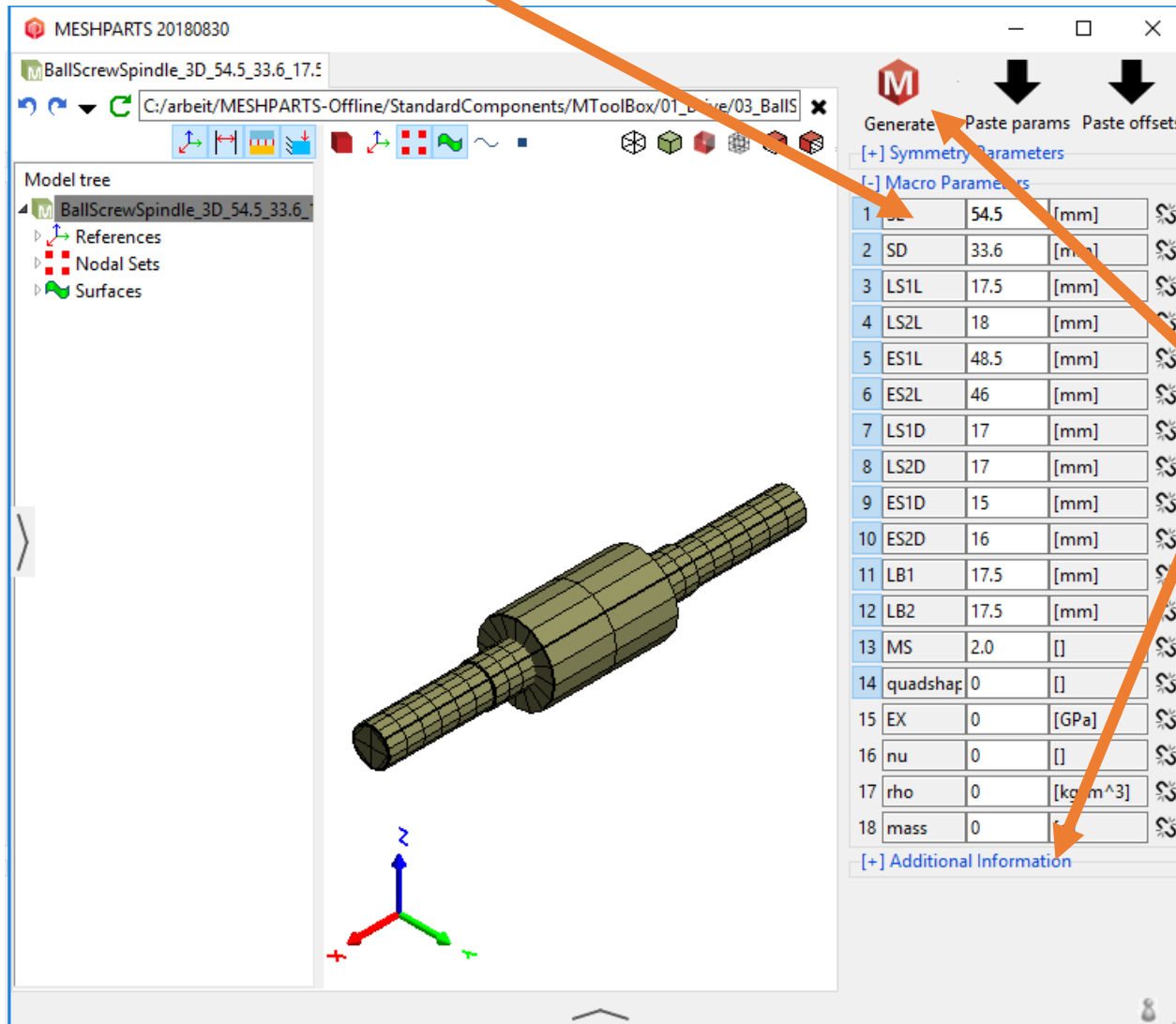
Erweitern Sie die Baumstruktur unter BallscrewSpindle.ans und wählen ein beliebiges FE-Modell aus.



Rechts-Klick auf das ausgewählte Modell und >Open



Nun passen Sie die Parameter des Modells an. Eine Beschreibung finden Sie unter „Additional Information“.



Wenn Sie fertig sind, klicken Sie auf „Generate“. Eine lokale Ansys-Installation ist vorausgesetzt.